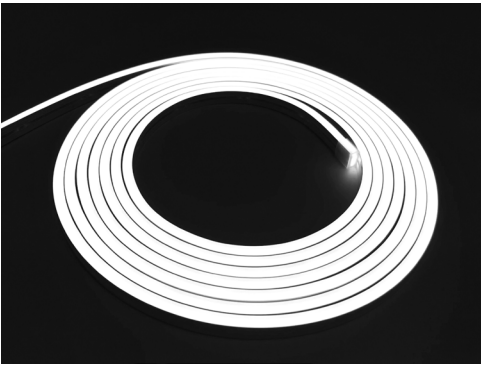


Side Bend Mini LED Flexible Neon



Features

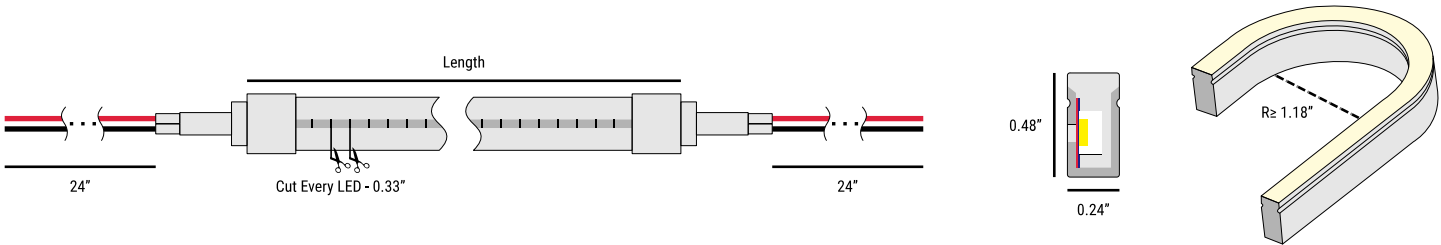
Suitable for indoor and outdoor lighting with a IP65 Rating
Linear flexible LED neon light without visible dots
Integral silicone extrusion molding, bendable and flexible to it irregular shaped spaces, like slope spaces
Corrosion resistant, flame retardant, anti-UV yellowing and UL, CE, FCC, RoHS certified

Parameters

Basic Parameters		Part Number	Color	Power	Lumens	Roll Length
LED Type:	SMD 2835	Z-NC-Smin-27K*	2,700K	3W / ft.	71lm / ft.	33 ft.
Input Voltage:	24 VDC	Z-NC-Smin-30K	3,000K	3W / ft.	71lm / ft.	33 ft.
White CCT CRI:	>90	Z-NC-Smin-35K*	3,500K	3W / ft.	71lm / ft.	33 ft.
Beam Angle:	120°	Z-NC-Smin-40K*	4,000K	3W / ft.	71lm / ft.	33 ft.
Protection Rate:	IP65	Z-NC-Smin-50K*	5,000K	3W / ft.	71lm / ft.	33 ft.
Safety Rating:	CE, FCC, RoHS, UL	Z-NC-Smin-65K	6,500K	3W / ft.	71lm / ft.	33 ft.
Warranty:	3 Years	Z-NC-Smin-R	Red	3W / ft.	N/A	33 ft.
		Z-NC-Smin-G	Green	3W / ft.	N/A	33 ft.
		Z-NC-Smin-B	Blue	3W / ft.	N/A	33 ft.
		Z-NC-Smin-O*	Orange	3W / ft.	N/A	33 ft.
		Z-NC-Smin-P*	Pink	3W / ft.	N/A	33 ft.
		Z-NC-Smin-Y*	Yellow	3W / ft.	N/A	33 ft.
		Z-NC-Smin-RGB*	RGB Color Changing	4W / ft.	N/A	16.4 ft.
		Z-NC-Smin-RGBIC	RGBIC Color Chasing	4.5W / ft.	N/A	13.2 ft.

*4-8 Week Lead Time

Dimensions



Side Bend Mini LED Flexible Neon

Accessories



Z-NC-Smin-EC
End Cap



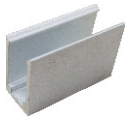
Z-NC-Smin-FC
End Cap - Forward Wire Exit



Z-NC-Smin-SC
End Cap - Side Wire Exit



Z-NC-Smin-BC
End Cap - Back Wire Exit



Z-NC-Smin-Clip
Clip

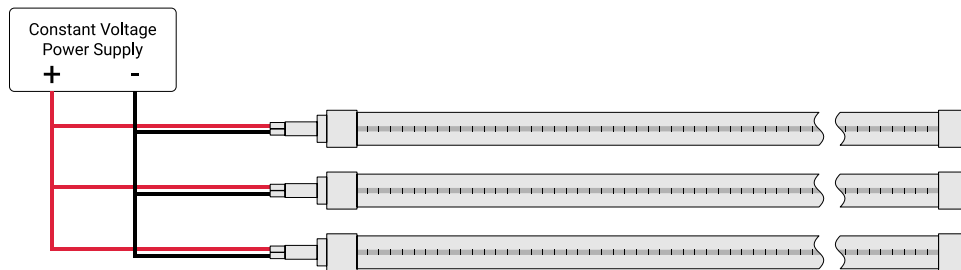


Z-NC-Smin-CL4FT
Track



Z-NC-Smin-Ftrack
Flex Track

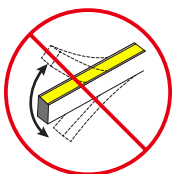
Connection Diagram



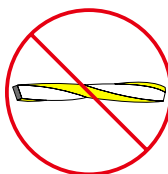
Bending Directions



Warnings



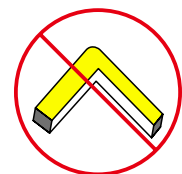
No bending up and down



No twisting and bending



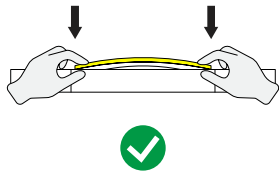
Repeated bending is prohibited



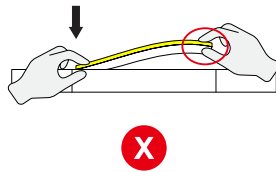
No 90° or sharp angle bends

Side Bend Mini LED Flexible Neon

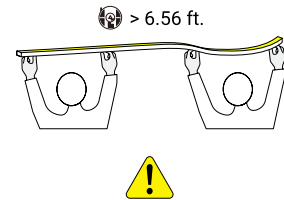
Installation & Disassembly in Track



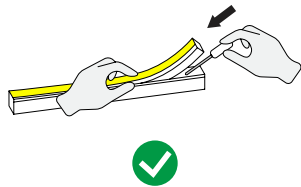
Installation of light strip from both ends



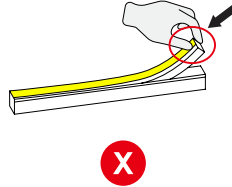
Prohibit installation from one direction



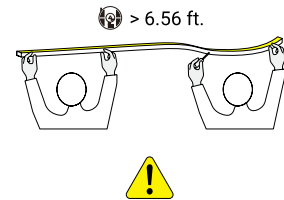
When the length of the light strip exceeds 6.56 ft., it is recommended that two people install it



Use tools to carefully and slowly pry during disassembly



Prohibition of direct violent pulling

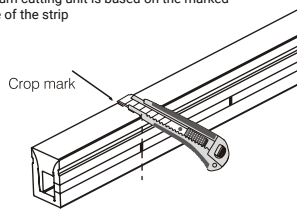


When the length of the light strip exceeds 6.56 ft. it is recommended that two people disassemble it

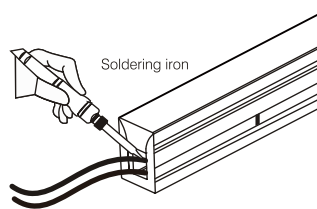
Cutting, Soldering, & Plug Installation

1. Cut the strip to the desired size

⚠ The minimum cutting unit is based on the marked cutting line of the strip

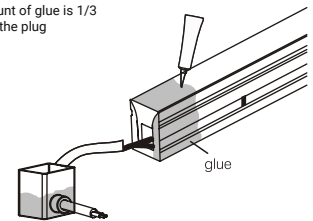


2. Connect the wire to the light strip (note the direction of positive and negative polarity)



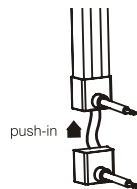
3. Insert the plug with a hole into the cable, and inject glue into the plug

⚠ The amount of glue is 1/3 to 1/2 of the plug



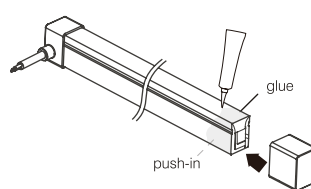
5. Push the plug into the light strip

⚠ When the plug is pushed into the light strip, pay attention to the decorative plug and the tail of the light strip in a vertical state, so as to avoid glue entering the inside of the light strip



6. Apply filler around the tail of the light strip, and then push the plug into the tail of the light strip

⚠ After the injection of glue need to be left flat for 2 hours to wait for the surface drying can be carried out after the project work, 24 hours completely dry



Installation Precautions

- Please install according to national standards and local electrical specifications.
- This product must be installed and maintained by a qualified electrician or other professional.
- Before installation, please check whether the product parameters are consistent with the requirements (see the Product Manual or label for product parameters).
- The power supply voltage must be consistent with the required voltage of this product.
- Ensure that the wattage of a single power supply is more than 20% of the load wattage of the power supply.
- The whole installation process is strictly prohibited to operate with electricity.
- All positive and negative terminals must be correctly matched during the wiring process.
- If terminals are used, it is appropriate that they cannot be pulled out with bare hands after connection.
- All connection points must be effectively insulated, waterproof and anti-corrosion treatment.