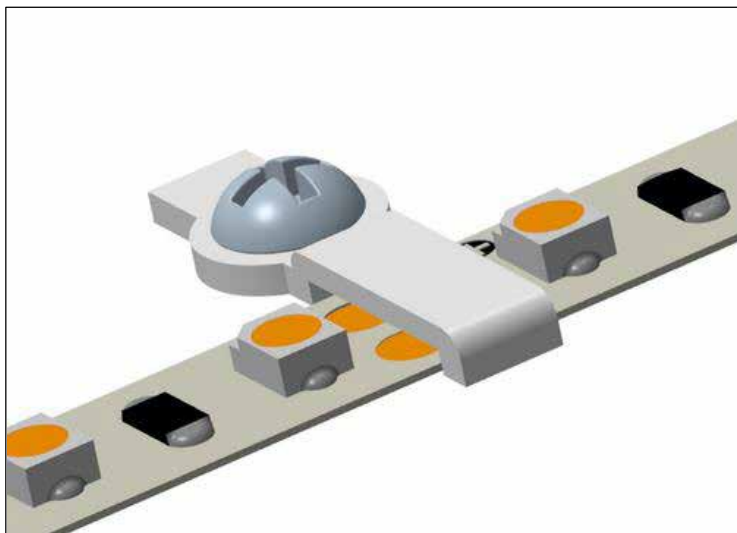


# LED BARE PANEL LIGHT WITH FIXED BOOTH



## Z-SPPT-Clip

### Basic parameters:

Material: Flame retardant nylon & PC

Screw: 0.12" \* 0.31" \* length (stainless iron/\*-shaped self-tapping round head)

Color: White & transparent

### Product characteristics

1. Ultra-thin design, lower height after installation than common lamp beads.
2. Easy to use, easy to install, single screw design.
3. Repair and replace the strip without removing the screws, quick to use, both hard and soft strip.
4. Improve the traditional installation process, reinforce 3M aging fall off.
5. The effect after installation does not affect the light source irradiation, small volume, the use of hard high temperature resistant environmental protection materials, fire retardant.



### Technology and parameter

Base: Nylon & Polycarbonate

Screws: Eco-friendly 0.12" \* 0.31" \* Length (Stainless steel/\*-type self tapping round head)

Working temperature: 14°F to 113°F (-10°C to 45°C)

Temperature resistance: 221°F (105°C) for the housing

Flame retardant rating: in line with UL-94-V0

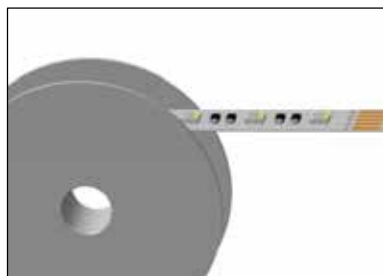
Applicable light strip specifications: 0.31" width, bare board soft and hard light strip, the number of lamp beads is 9 ~ 37 pcs/FT

Light strip PCB thickness: 0.01" ~ 0.03"

### Product certification



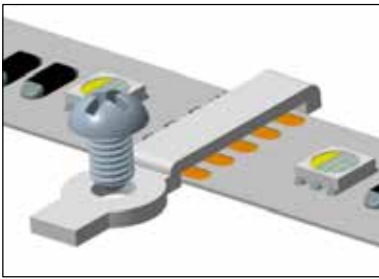
### Installation indication



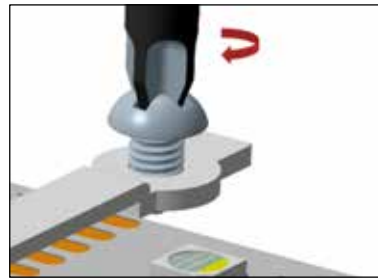
1. Unfold the bare LED light strip and peel off the 3M isolation paper on the back, and attach the light strip to the position you need to install.



2. After fixing, determine the position of the light strip to install the fixed card holder (the position of the light strip bead and the light strip or the position of the light strip pad)



3. Use the fixed card holder to install between the leds, it is recommended to install 2-3pcs holder per meter.



4. Align the screws with the round hole fixing the card seat and turn clockwise to ensure that the screws have locked the card seat. (Please use special tools for screws)



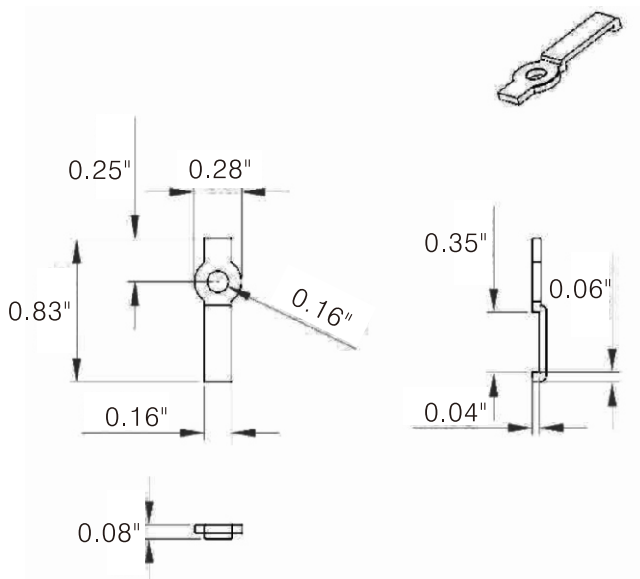
5. Installation completed

Instruction:  
Model Z-SPPT-Clip is suitable for less than or equal to Width 0.31" PCB board soft and hard light strip.

#### Basic dimension

Model number:

**Z-SPPT-Clip**



Note: All unmarked tolerances are  $\pm 0.004$ "  
Unit: "